

BioImagingUK Meeting – LRI

London, 12 June 2014

# Image Analysis

Dr. rer. nat. Luis Pizarro

Centre for Medical Image Computing

Department of Computer Science



# Contents

- Image Analysis in Context
- Main Topics
- UK-based Community
- Main Journals and Conferences

# Image Analysis in Context

- **Synergistic relationship:**
  - Image Analysis / Processing
  - Signal Processing
  - Computer Vision
  - Machine / Statistical Learning

# Main Topics

- **Filtering / Denoising / Restoration:**

$$E(u) = \int \left( (u - f)^2 + \|\nabla u\| \right) dx$$

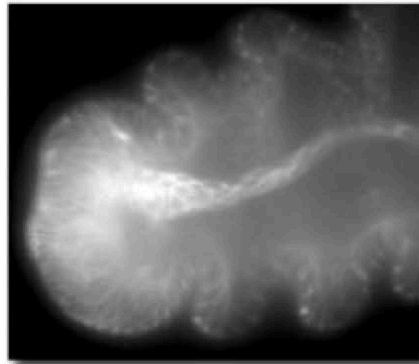


# Main Topics

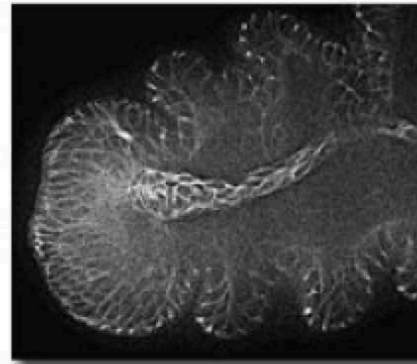
- **Deconvolution / Deblurring:**

$$E(u) = \int \left( h * u - f - f \ln \left( \frac{h * u}{f} \right) + \|\nabla u\| \right) dx$$

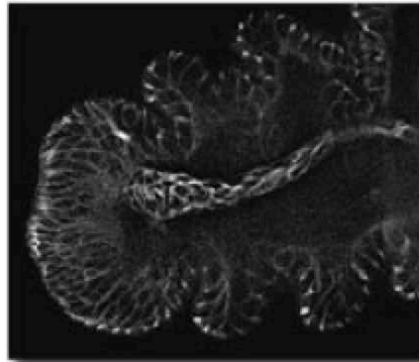
Raw data



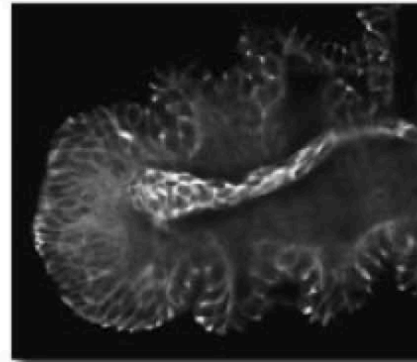
Nearest neighbours



Inverse Wiener filter



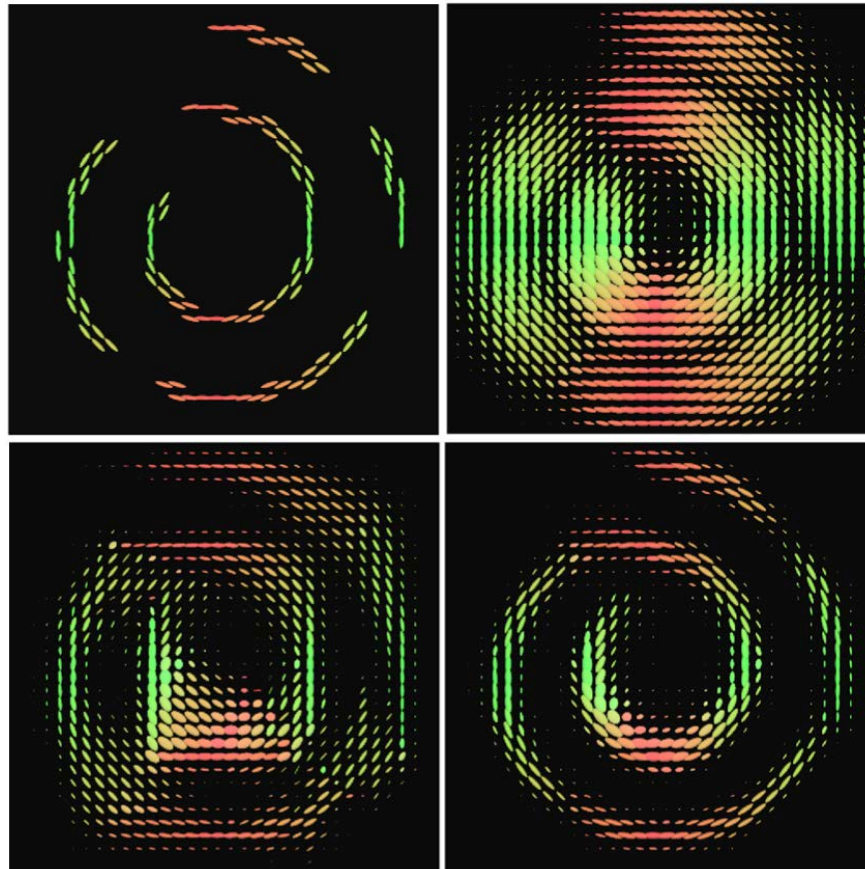
Blind deconvolution



# Main Topics

- **Mathematical Morphology:**

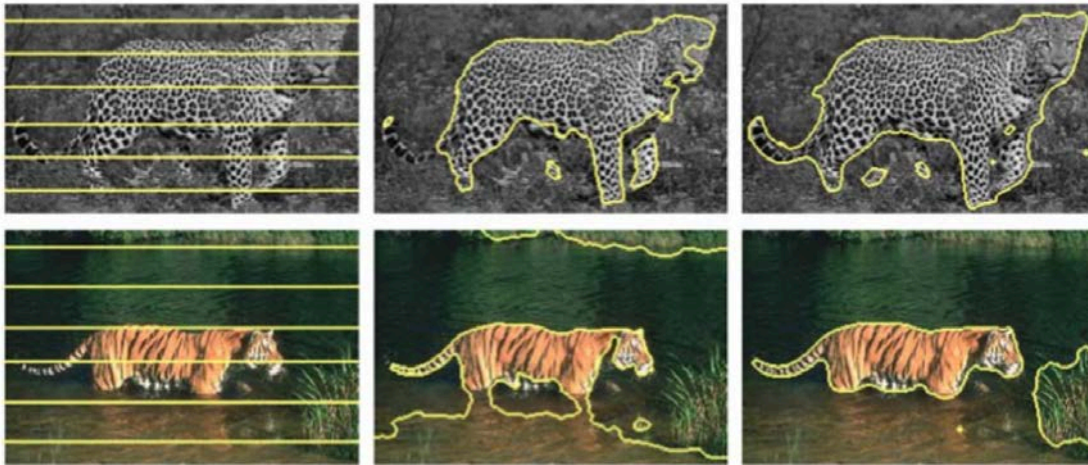
$$\partial_t u = \pm \|D(u) \cdot \nabla u\|$$



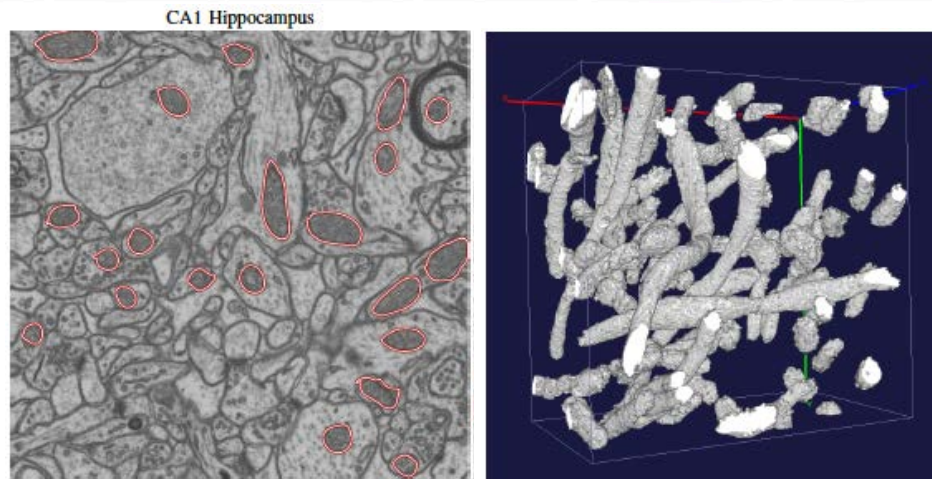


# Main Topics

- **Segmentation:**  $E(\Omega_i, p_{ij}) = - \sum_{j=1}^N \left( \int_{\Omega_1} \log p_{1j}(u_j(x)) dx + \int_{\Omega_2} \log p_{2j}(u_j(x)) dx \right)$



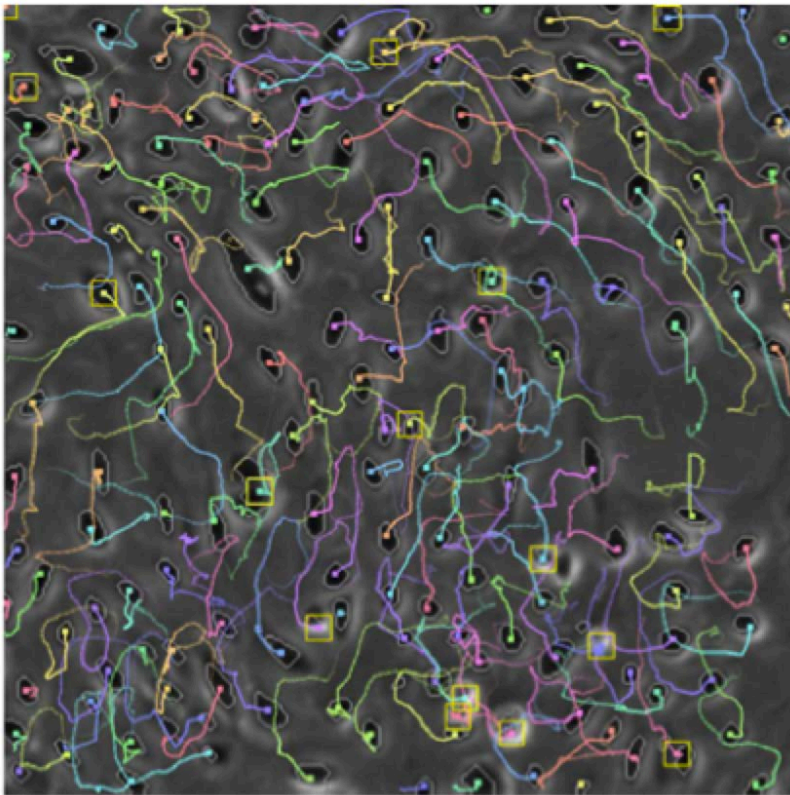
Brox *et al.*, 2010



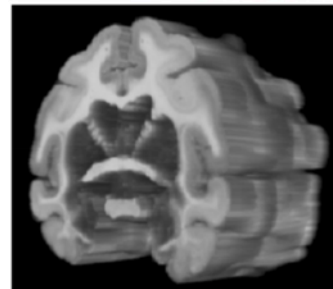
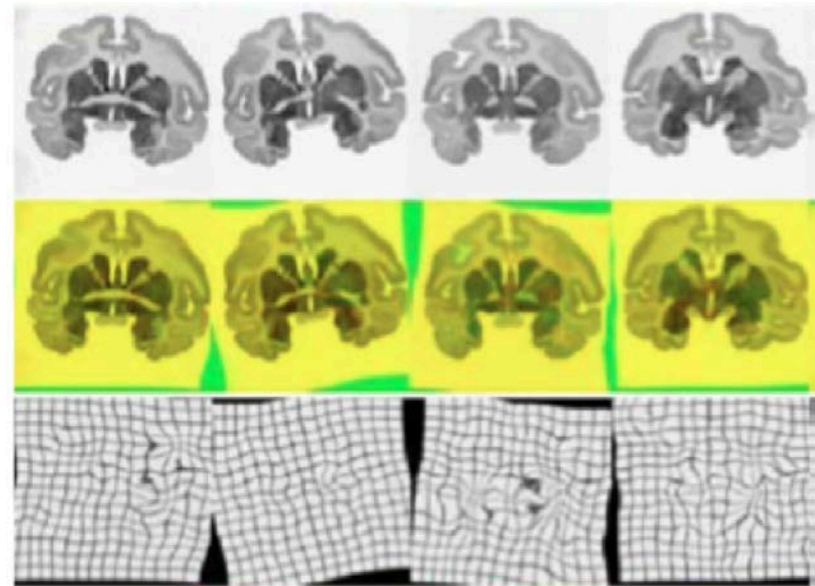
Lucchi *et al.*, 2010

# Main Topics

- **Tracking / Registration:**  $E(T) = \int \left( (I_{t_0} - T(I_t))^2 + \sum_i \left( \frac{\partial^2 T}{\partial x_i^2} \right)^2 \right) dx$



Li *et al.*, 2011

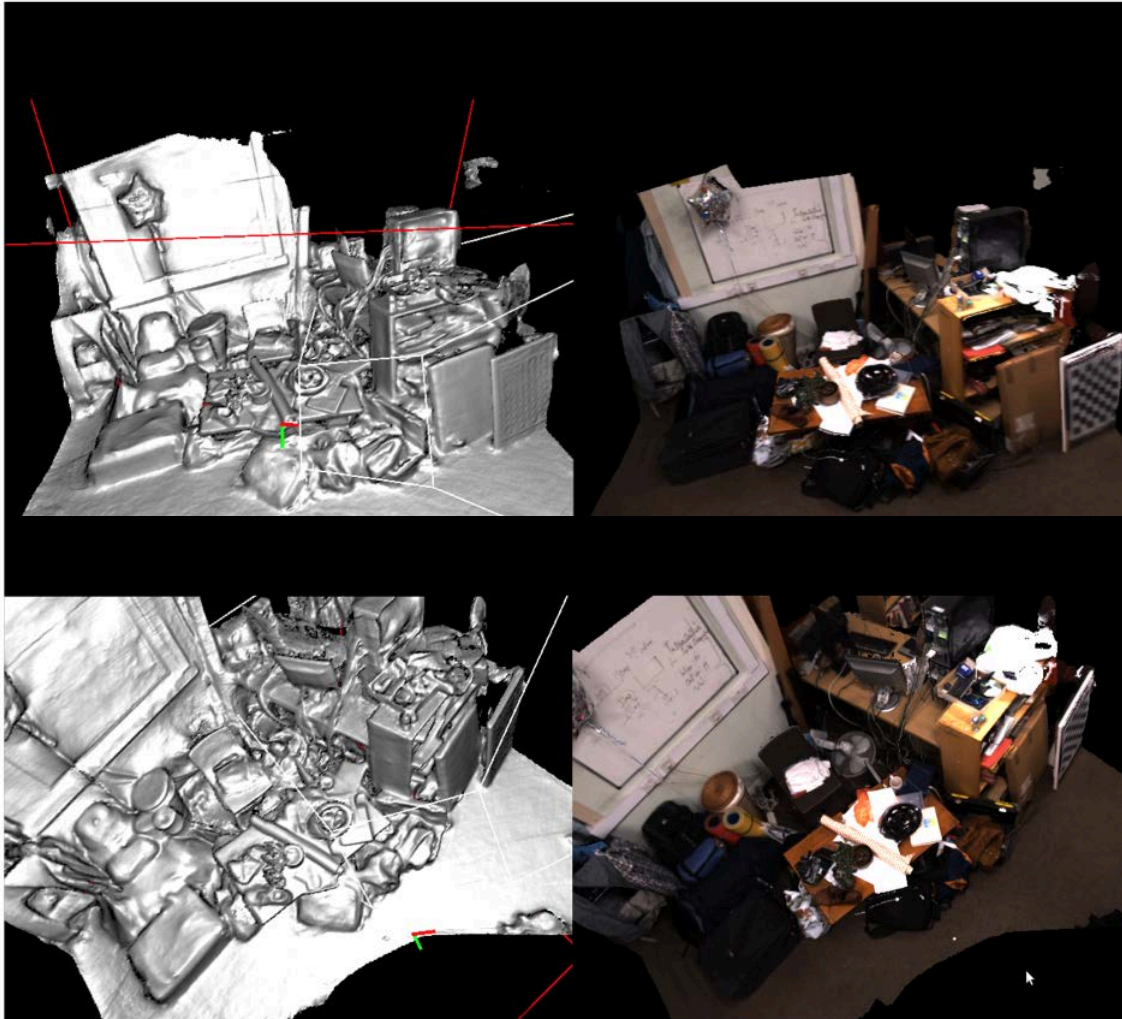


Arganda-Carreras *et al.*, 2010



# Main Topics

- **Scene Reconstruction:**



# UK-based Community

- **UK Biological Imaging Facilities:**



Source:  
Imaging and Cytometry Laboratory  
Bioscience Technology Facility  
University of York

# UK-based Community

- **UK Biological Image Analysis Labs:**



Dr. Nasir Rajpoot  
Bioimage Analysis Lab  
University of Warwick



Prof. Stephen J. Mckenna  
Computer Vision and Image Processing Group  
University of Dundee



Prof. Tony Pridmore  
Computer Vision Laboratory  
University of Nottingham



Dr. Jens Rittscher  
Biomedical Image Analysis Group  
University of Oxford



Dr. Luis Pizarro  
Computational BiImaging Lab  
X?

# Main Journals and Conferences

- **Journals:**

- IEEE Transaction on Image Processing
- International Journal of Computer Vision
- Journal of Mathematical Imaging and Vision
- SIAM Journal on Imaging Sciences
- Computer Vision and Image Understanding
- Image and Vision Computing
- IEEE Pattern Analysis and Machine Intelligence
- IEEE Transactions on Medical Imaging
- Medical Image Analysis

# Main Journals and Conferences

- **Conferences:**
  - CVPR (Computer Vision and Pattern Recognition)
  - ICCV (Computer Vision)
  - ECCV (European Computer Vision)
  - ICIP (Image Processing)
  - ICPR (Pattern Recognition)
  - ISBI (Biomedical Imaging: From Nano to Macro)
  - MICCAI (Medical Image Computing)
  - SPIE (Medical Imaging)
  - BII (Bioimage Informatics)